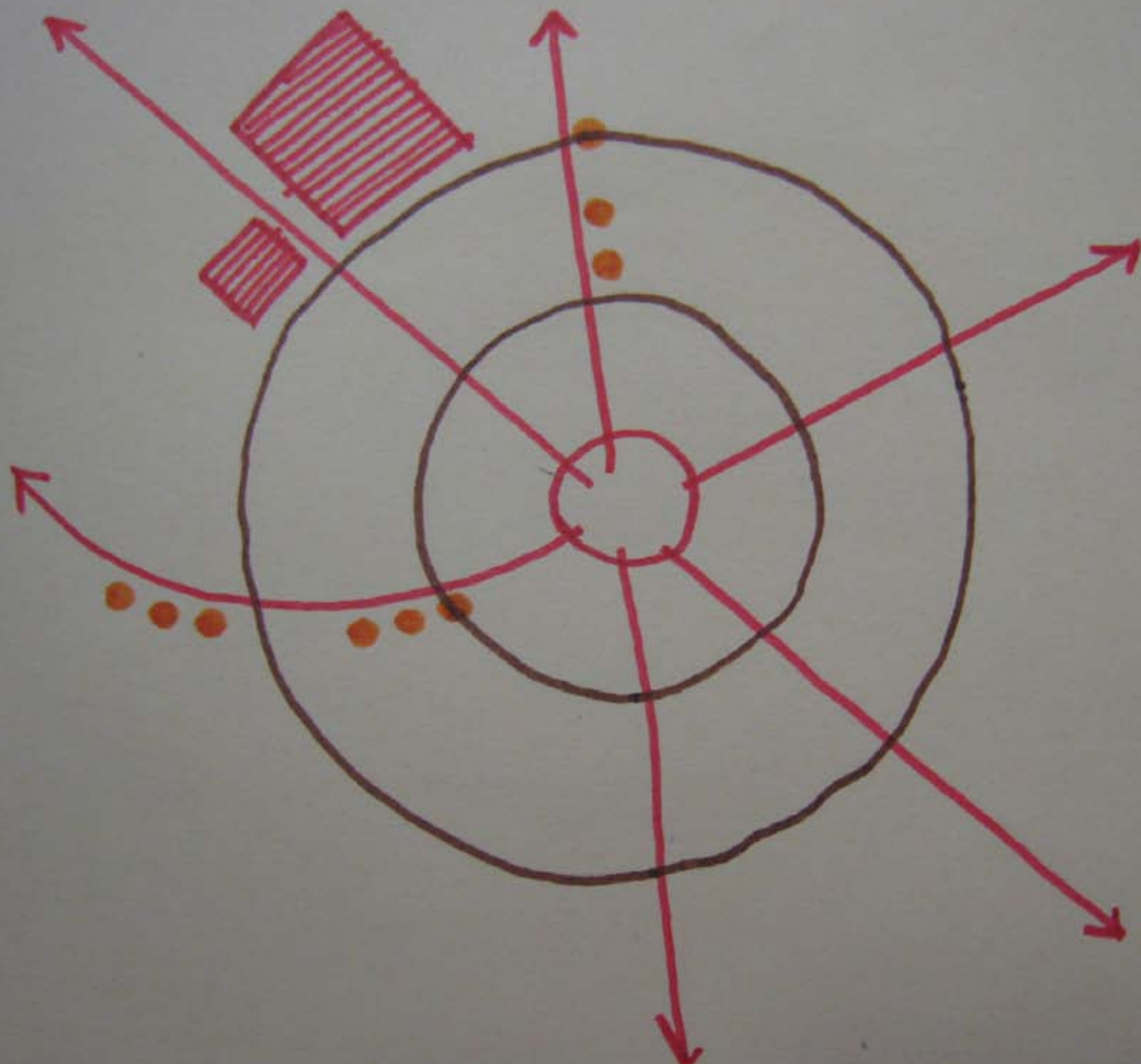
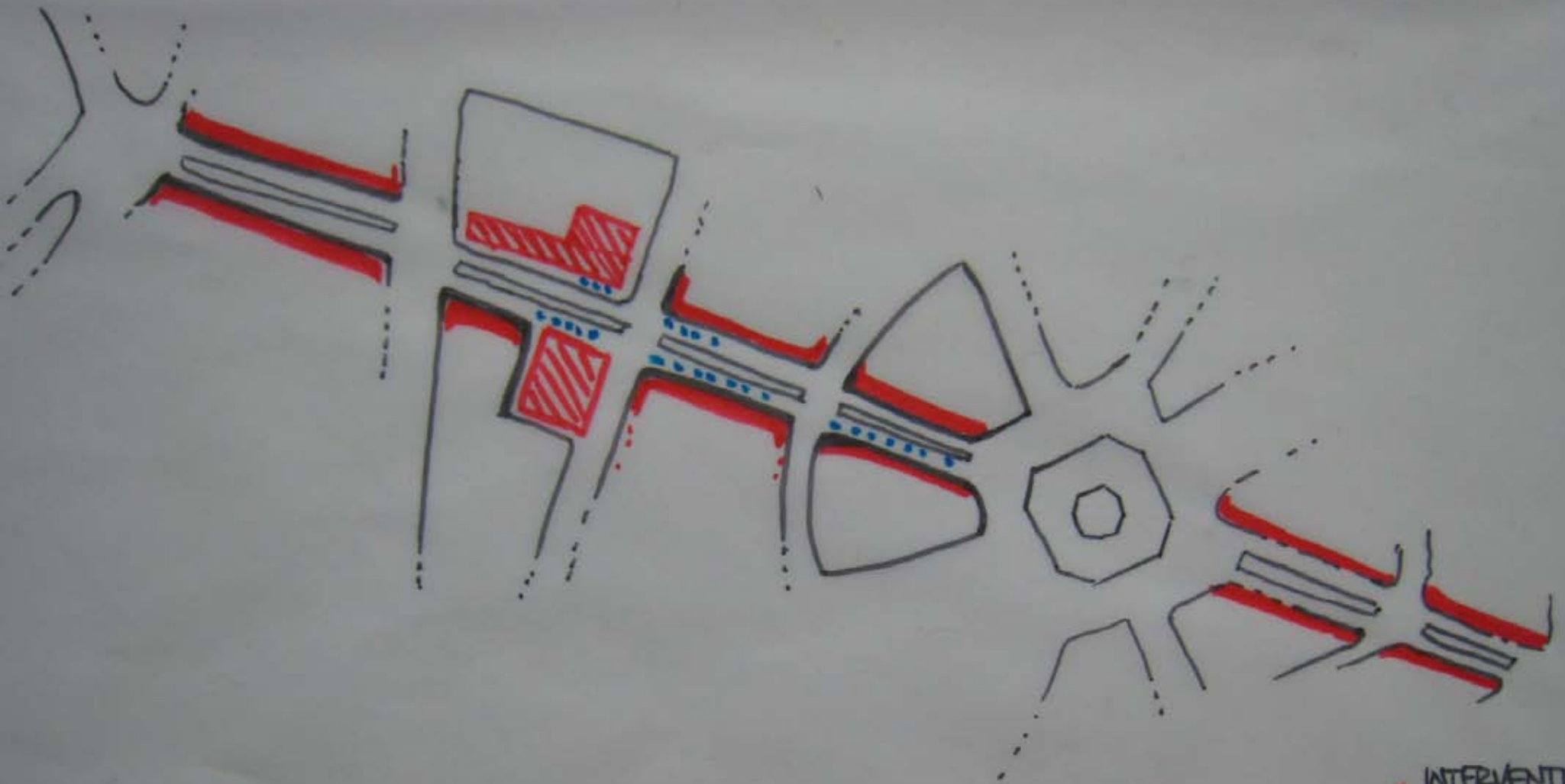




ANALYSIS OF BUILT/NON-BUILT AREAS AND CIRCULATION

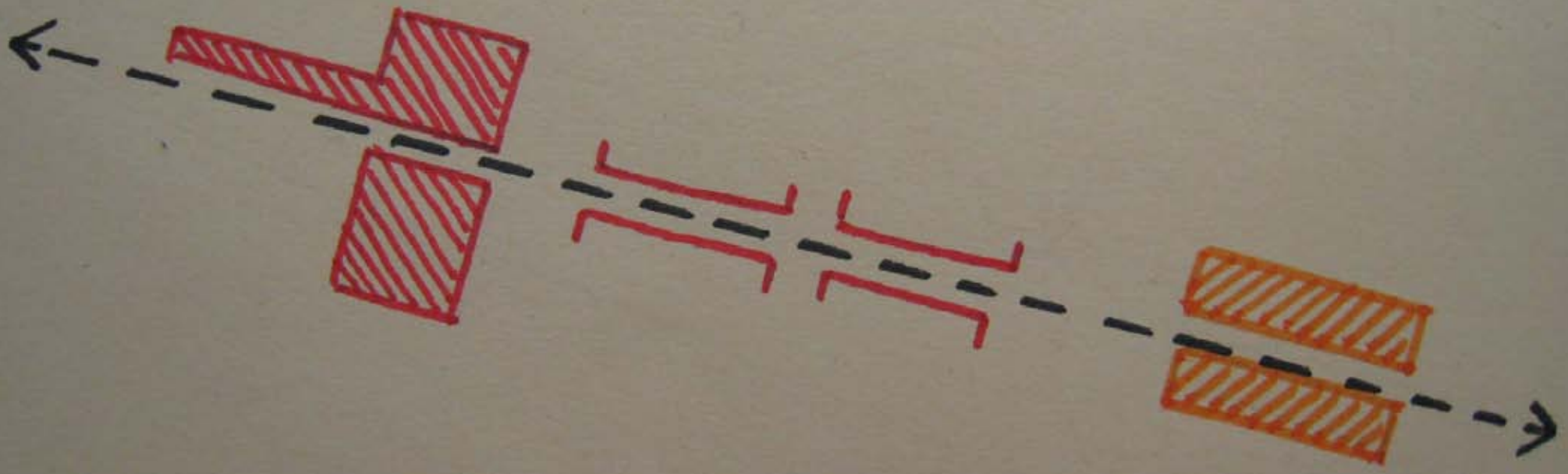


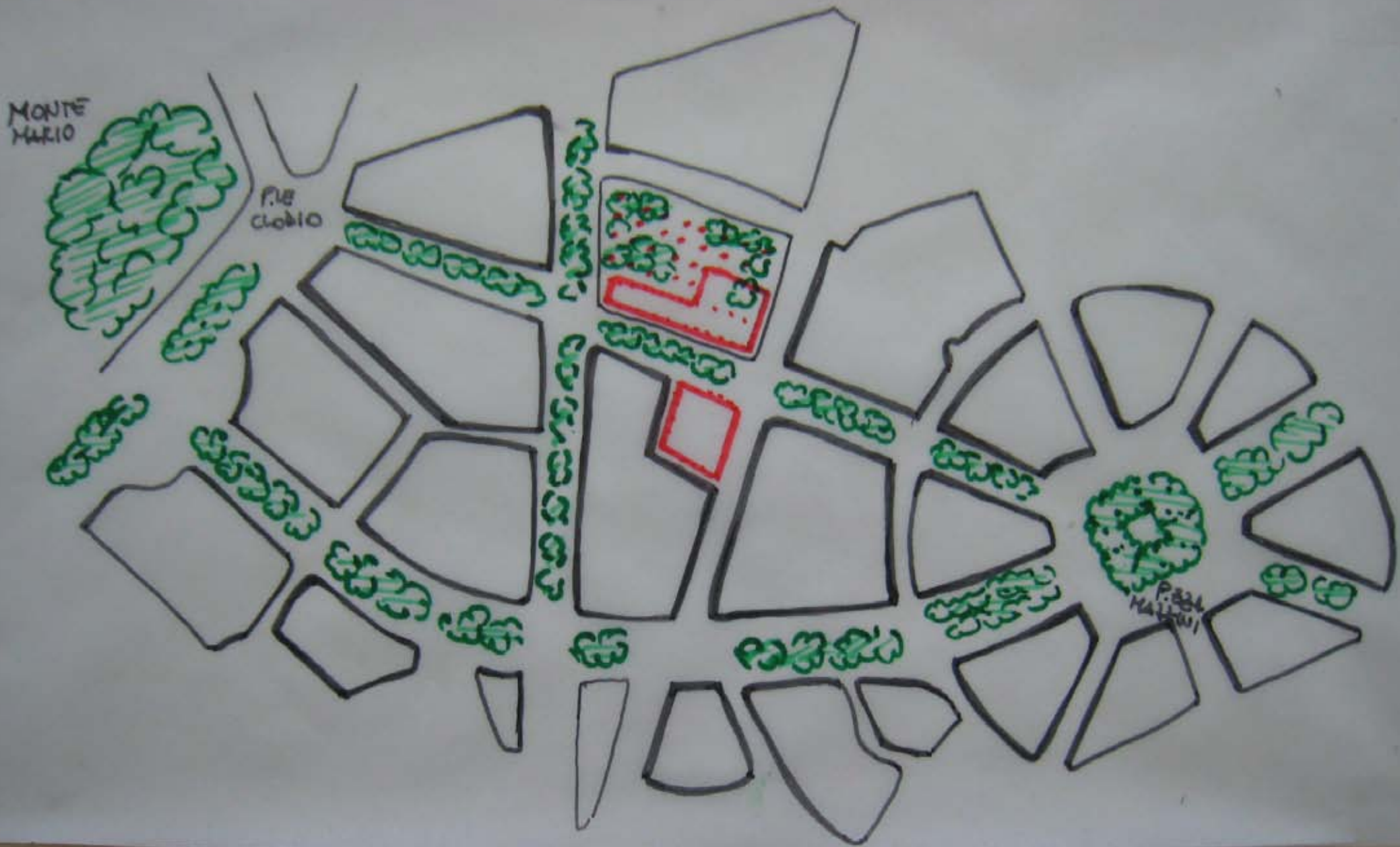


VIA SABOTINO AS A COMMERCIAL
CORRIDOR

- INTERVENTION PLOT
- SHOPS
- STREET MARKETS

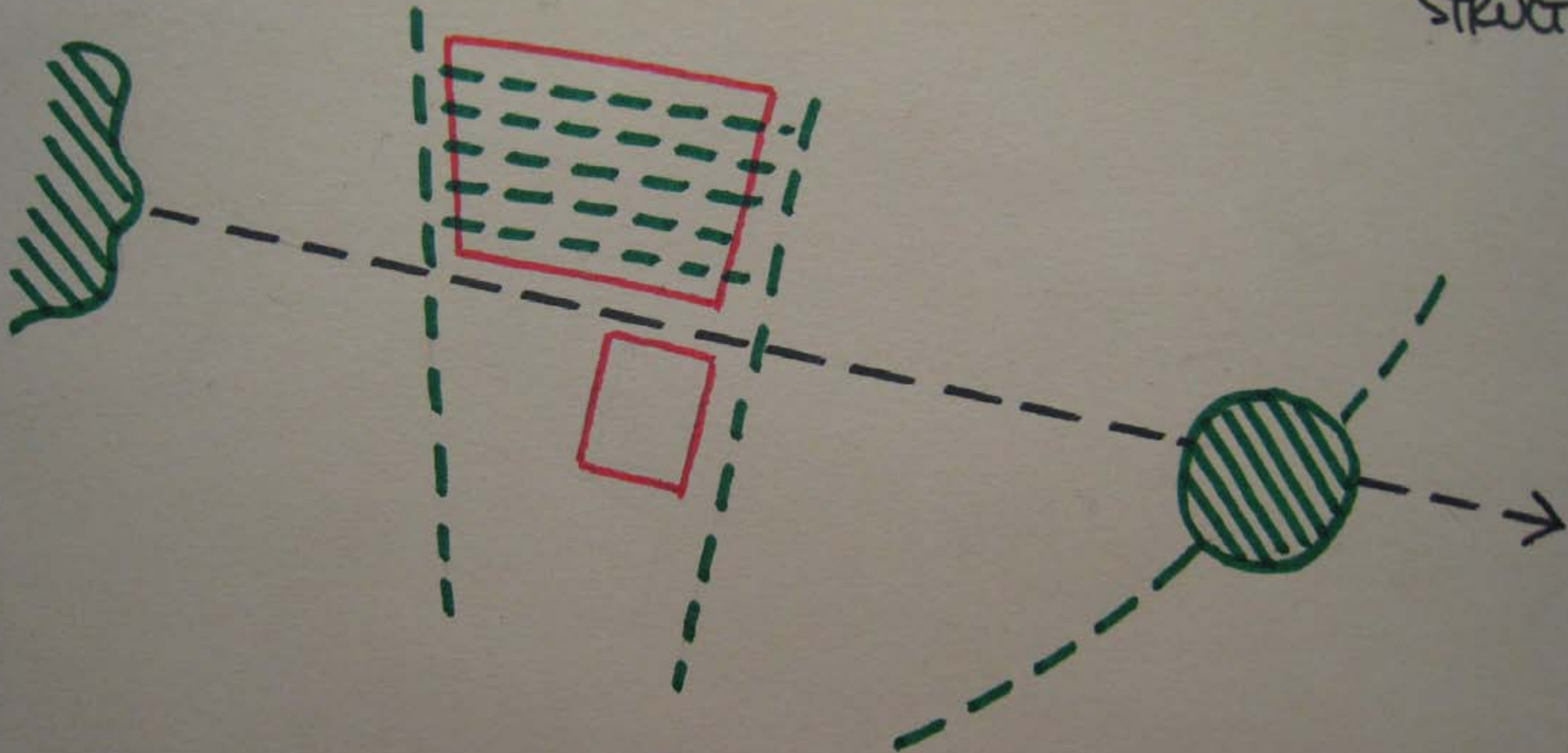
VIA SABOTINO AS A COMMERCIAL CORRIDOR





VIA SABOTINO AS A GREEN
STRUCTURE

VIA SABOTINO AS A GI
STRUCT



STRENGTHS

* HISTORICAL
BACKGROUND

* USER
VARIETY

* USER
DENSITY

* GREEN
BELT

WEAKNESSES

* TRAFFIC

* A BLIND
CORNER

* TWO BLOCKED
DIRECTIONS

* A DIFFERENCE
OF QUOTA

* LACK OF THE
SIDEWALKS

* PRESENCE OF
OTHER STREET
MARKETS

OPPORTUNITIES

* QUALIFICATION
OF THE AREA

* POSSIBILITY OF
IMPROVEMENT

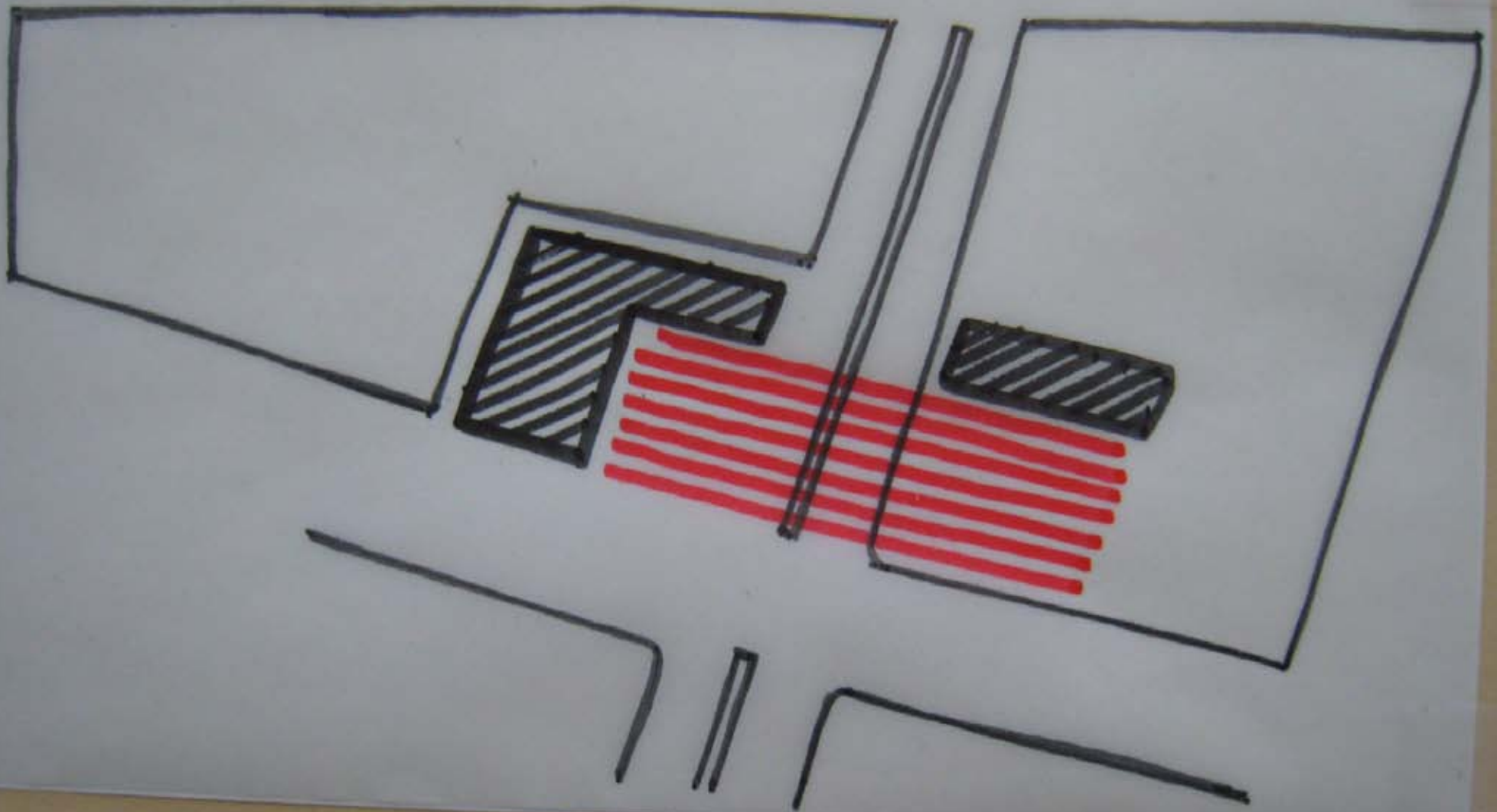
* POSSIBILITY OF
HIGH-RISE
BUILDING

* POTENTIAL OF
TRANSPORTS

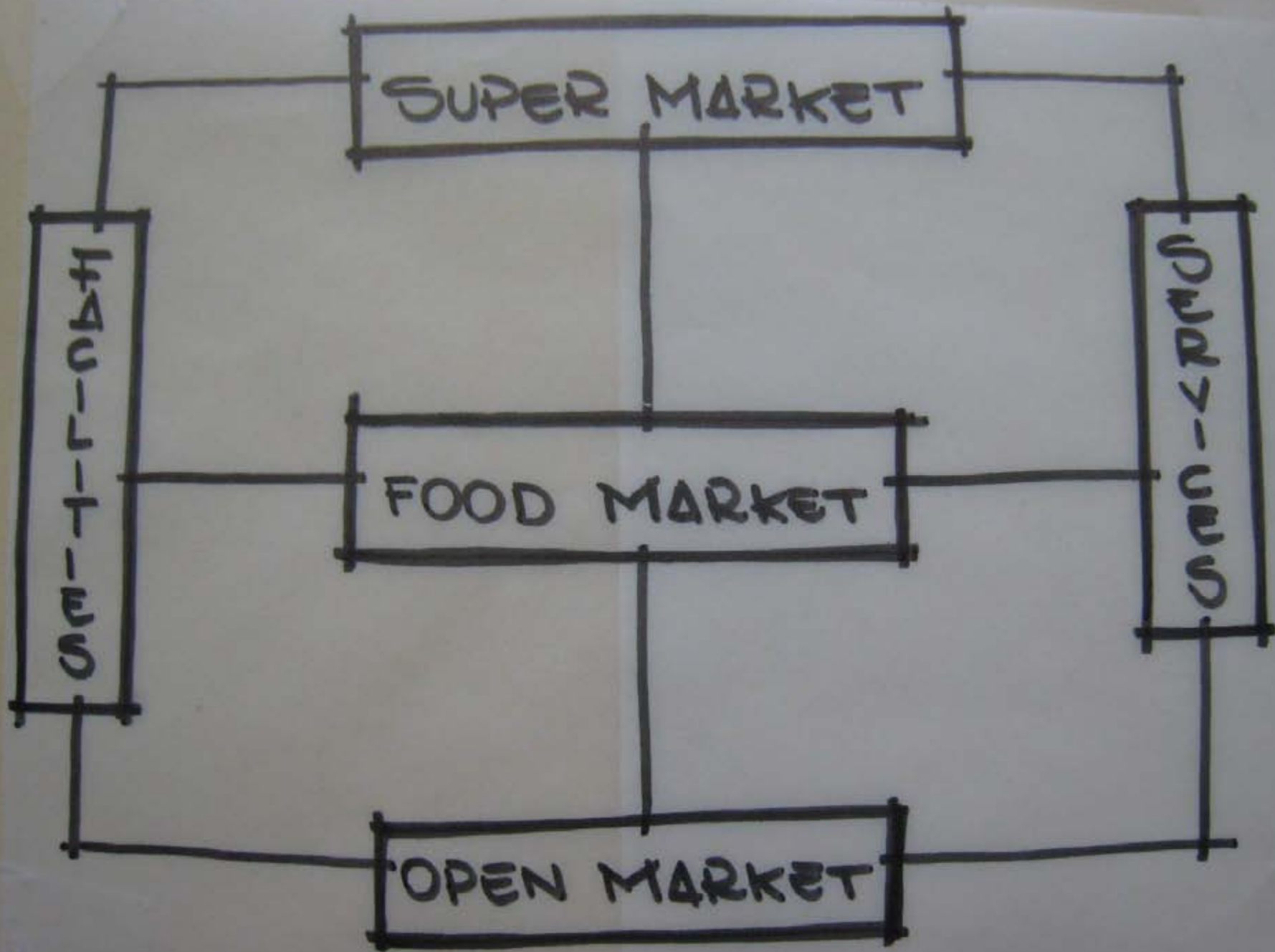
THREATS

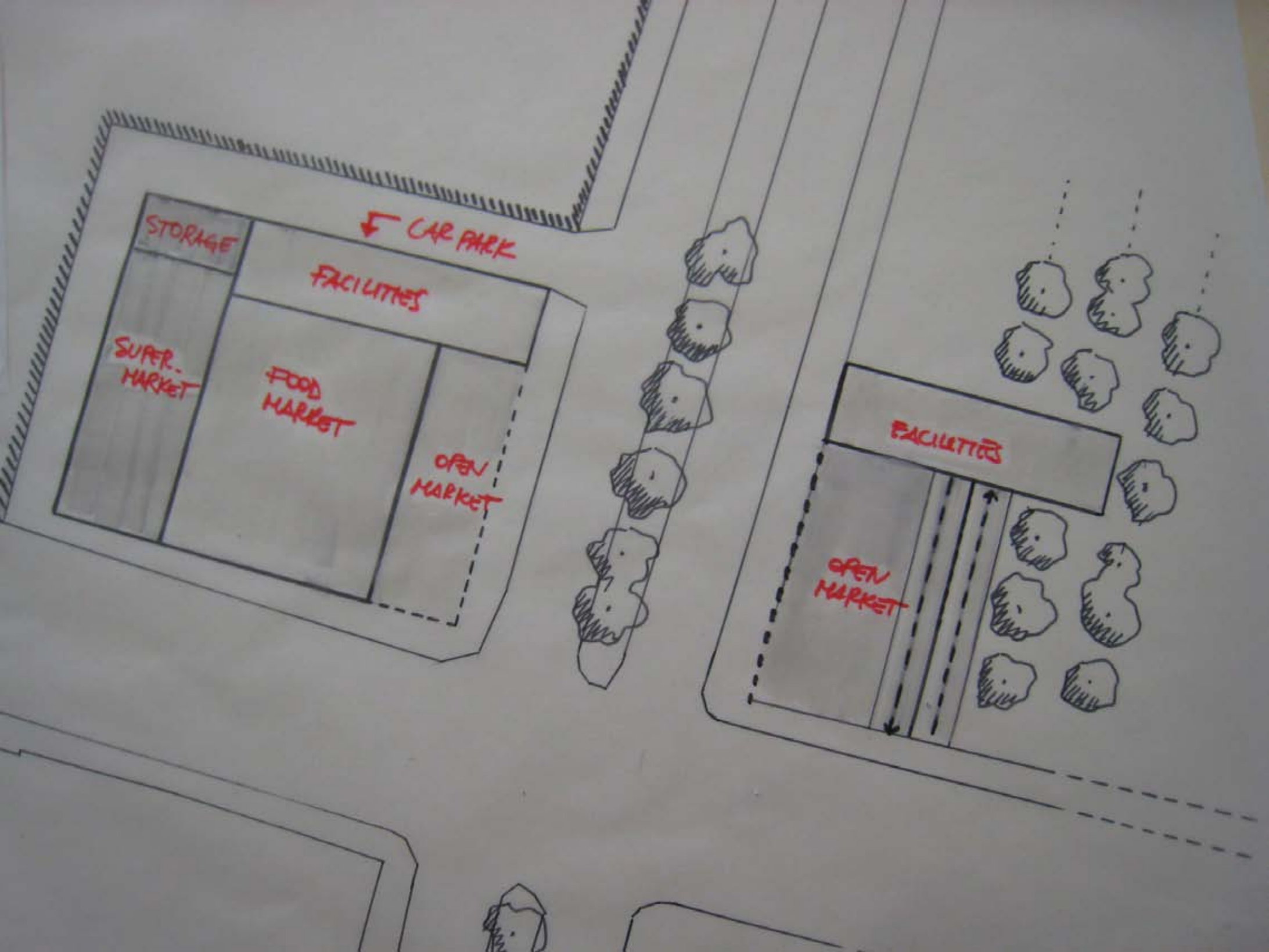
* BUS DEPOSITO

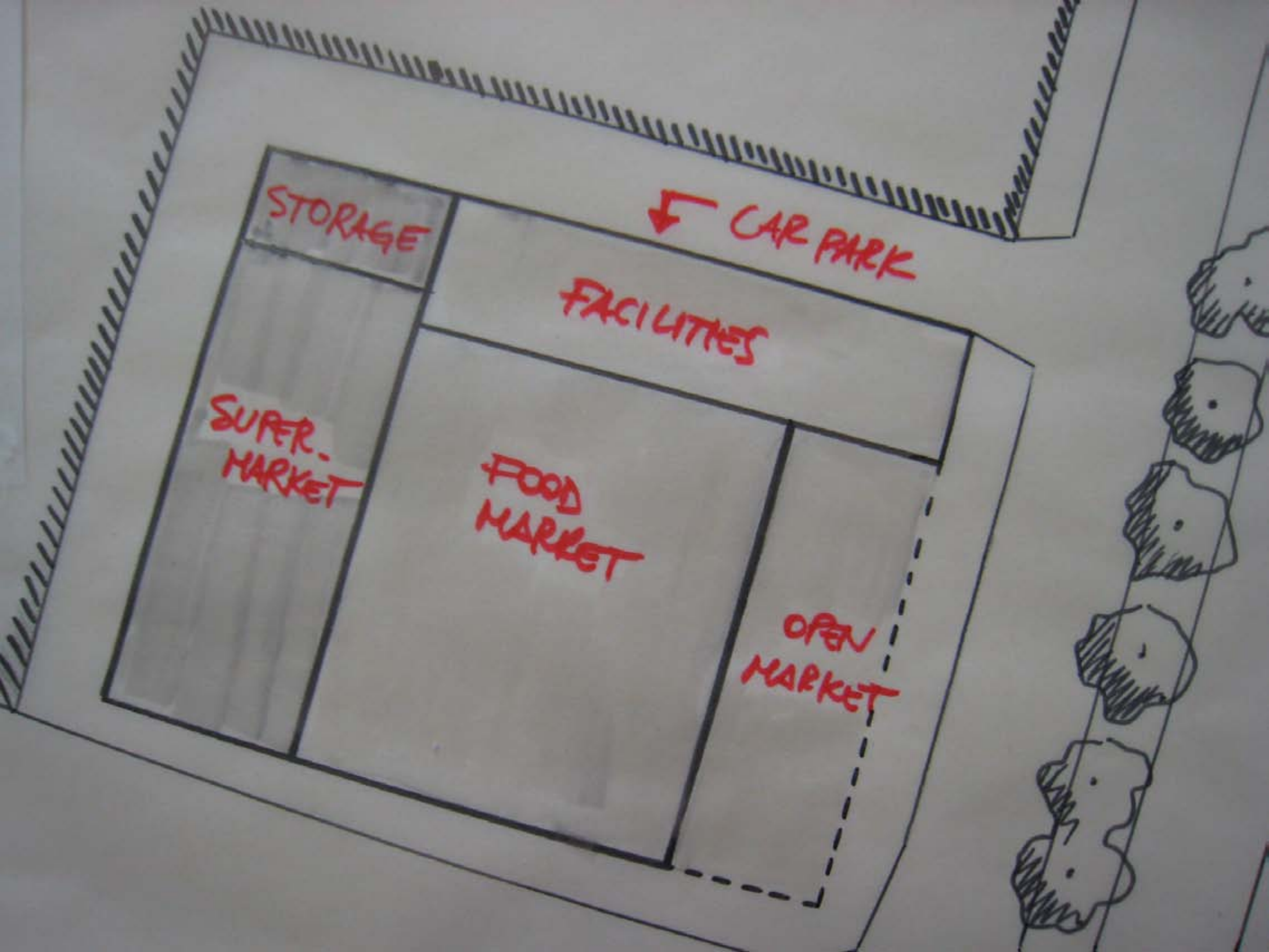
* TRAFFIC



OVER ALL IDEA







STORAGE

↓ CAR PARK

FACILITIES

SUPER-MARKET

FOOD MARKET

OPEN MARKET

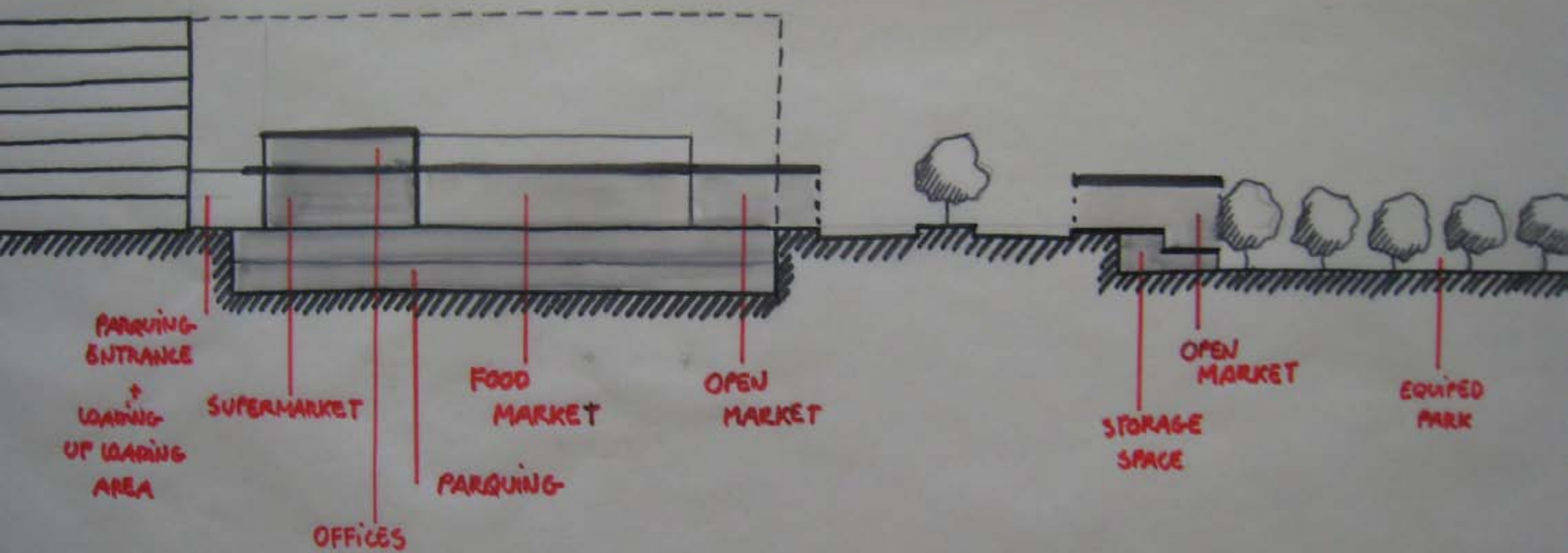
FACILITIES

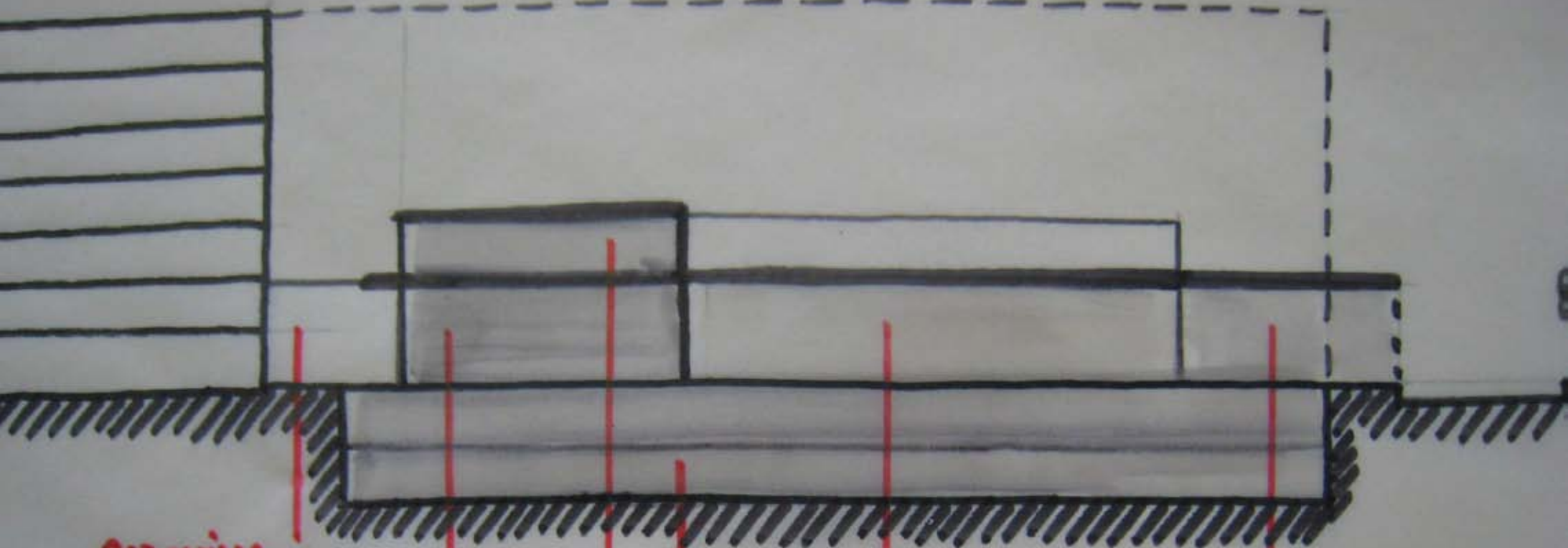
OPEN
MARKET



CHILDREN

TER
AREA
EAS
USE





PARQUING
ENTRANCE
+
LOADING
UP LOADING
AREA

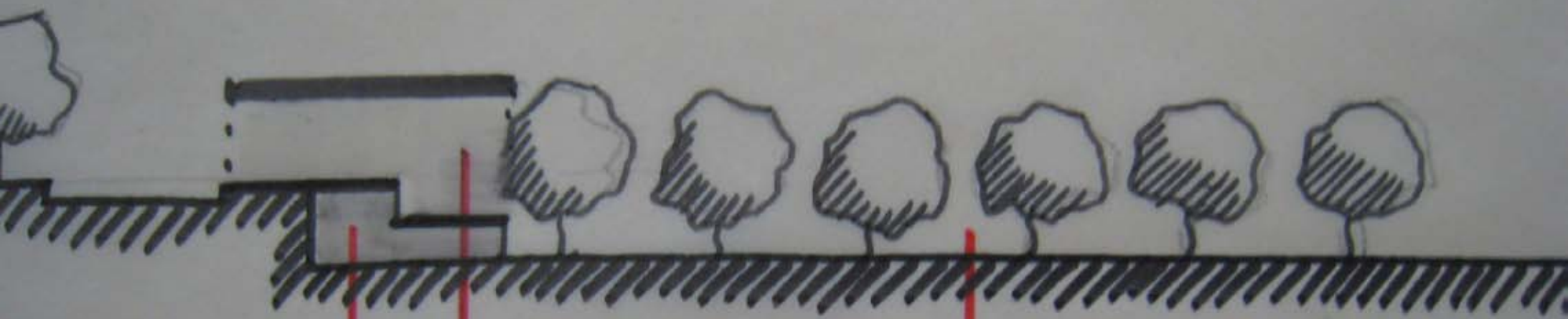
SUPERMARKET

FOOD
MARKET

OPEN
MARKET

PARQUING

OFFICES



STORAGE
SPACE

OPEN
MARKET

EQUIPED
PARK

