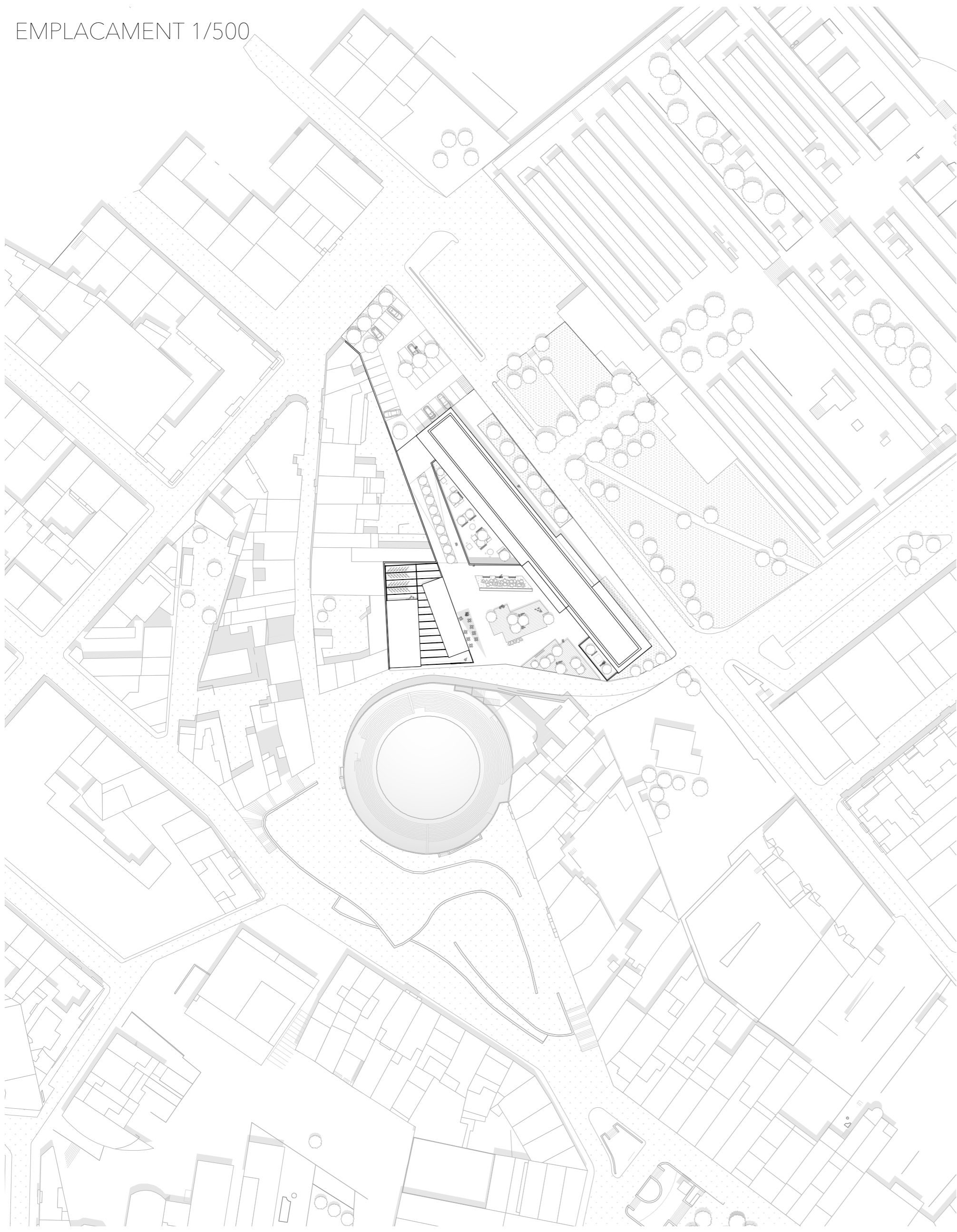
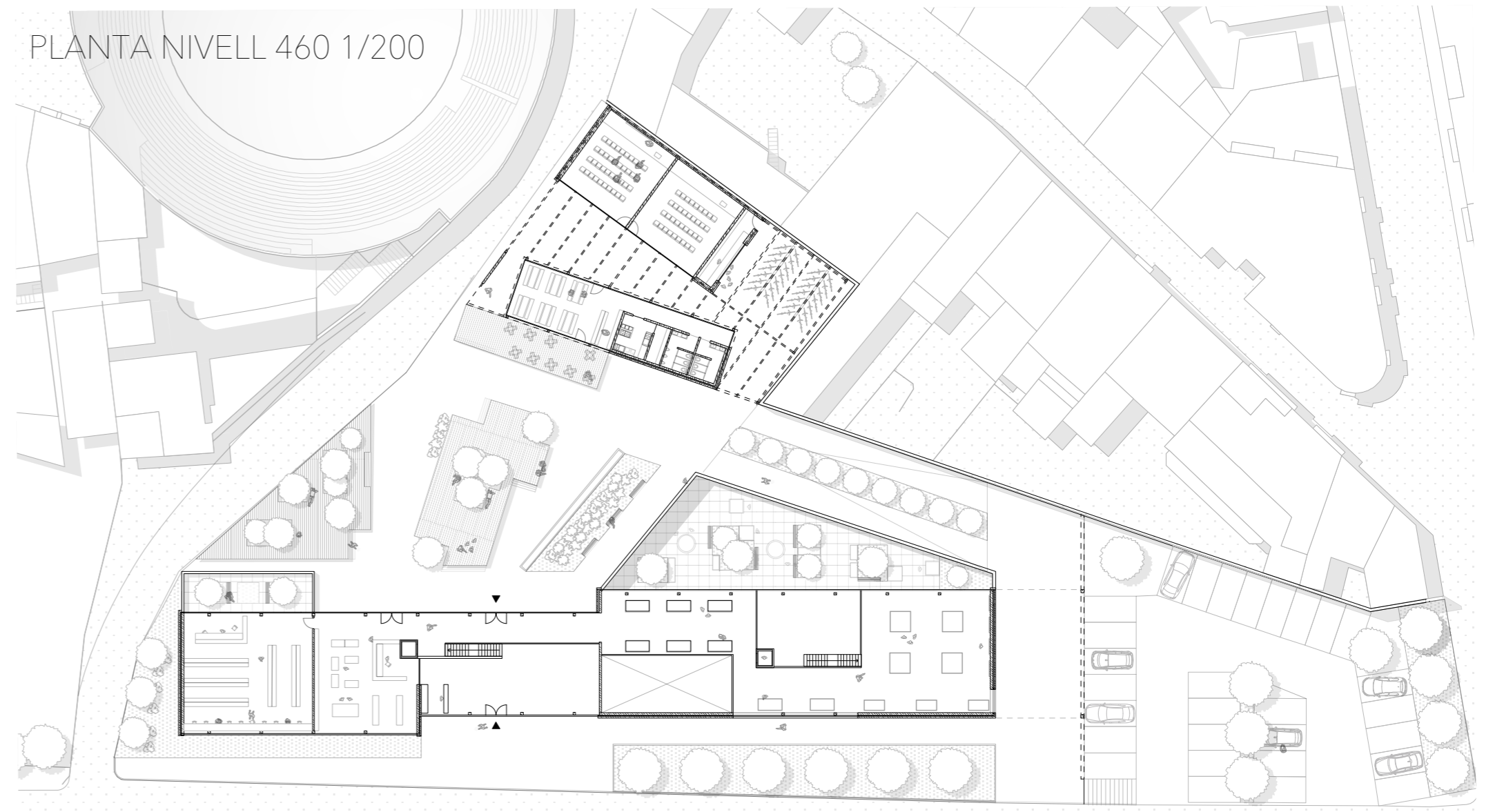


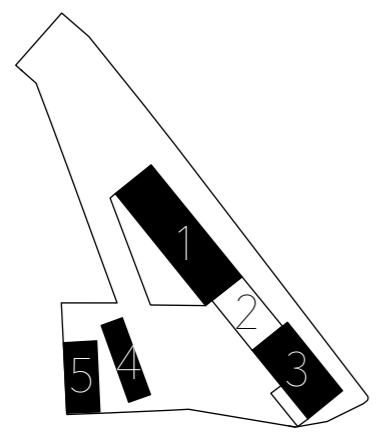
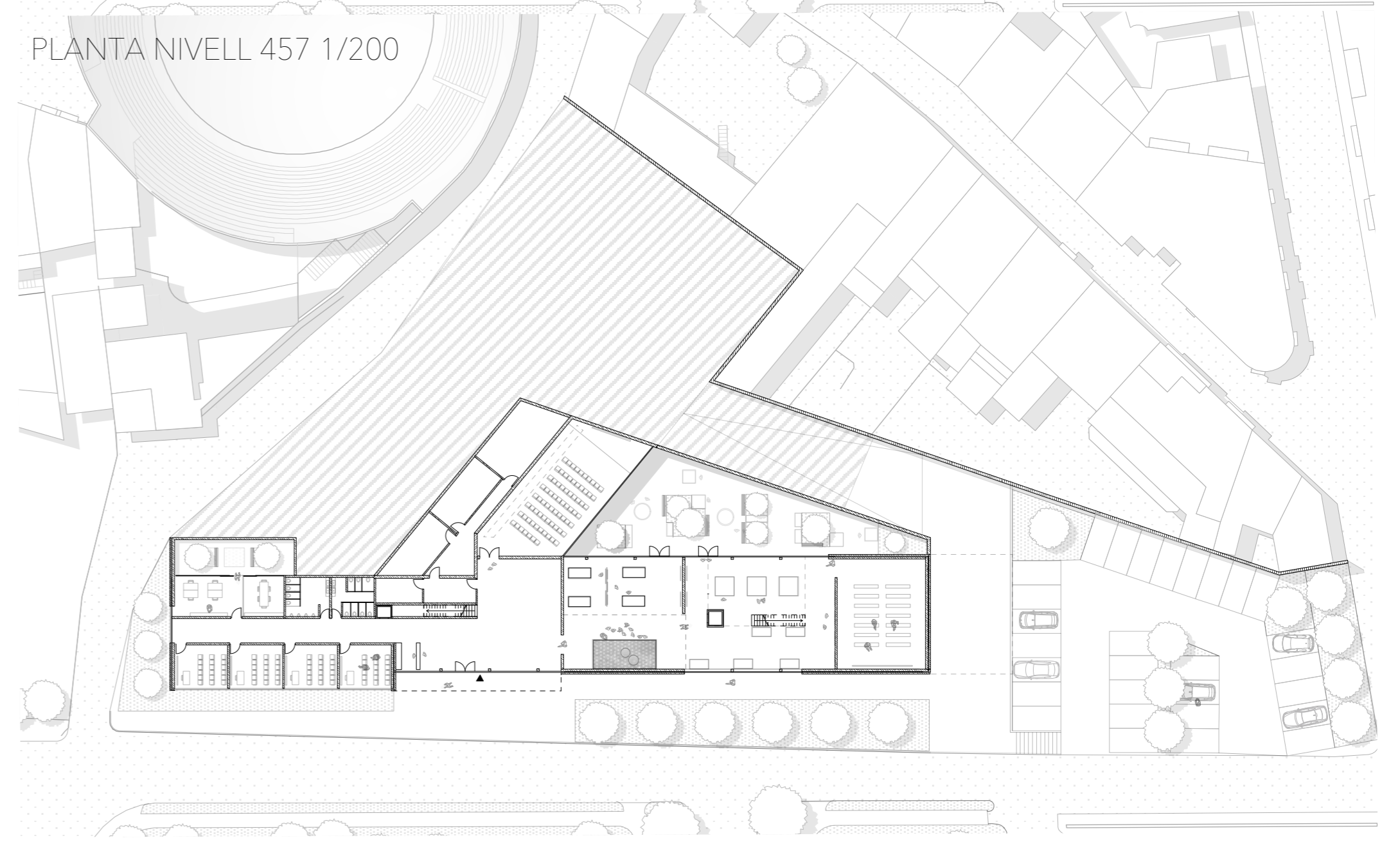
EMPLACAMENT 1/500



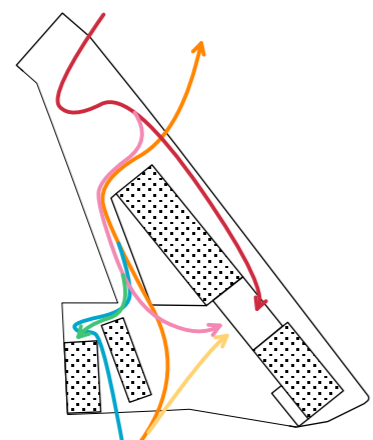
PLANTA NIVELL 460 1/200



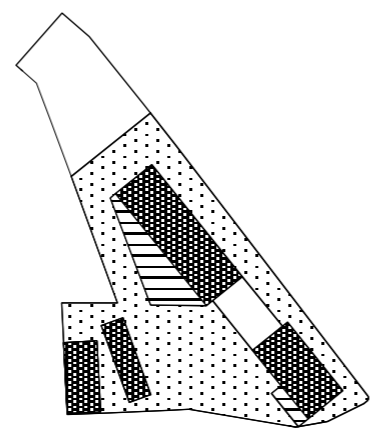
PLANTA NIVELL 457 1/200



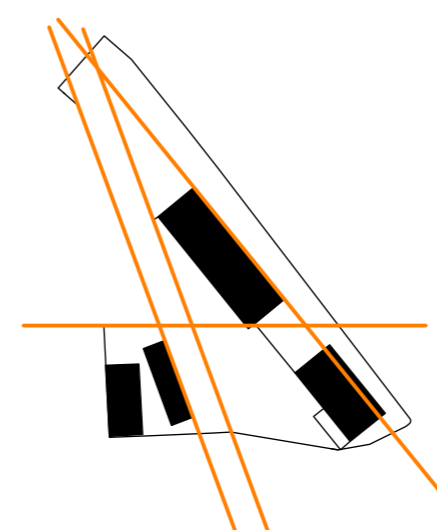
-VOLUME-
THE BUILDING CAN BE
DIVIDED IN 5 PARTS.
1 MUSEUM
2 FOYER
3 CLASSES / SHOP /
LIBRARY
4 CAFÉ / RESTAURANT
5 TOUR CLASSES + BIKE
RENTAL



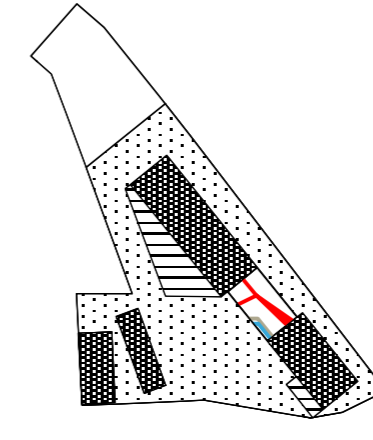
-WAYS-
THE WAYS THROUGH
AND AROUND THE
BUILDING CAN VARY
LOT. THE PUBLIC
SPACE GUIDES THE
VISITOR INTO THE
BUILDING VERY SIMPLE
AND
DIRECTLY:



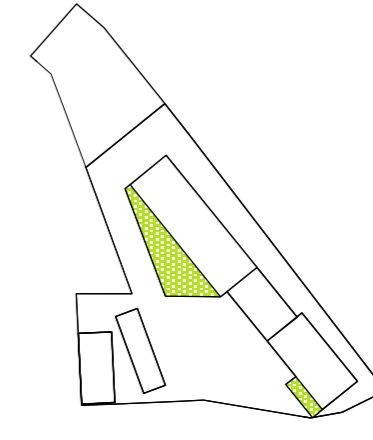
-PRIVATE / PUBLIC-
THE ENSURE A FULL
TIME ACCESSIBILITY TO
THE SITE THE BUILDING
OFFERS BY ITS PATIOS
INSIGHT EVEN IN THE
NIGHT TIME. ALSO FOR
BIKERS THE BUILDING
DOES NOT BLOCK THE
WAY, EVEN MORE IT
OPENS UP A NEW WAY.



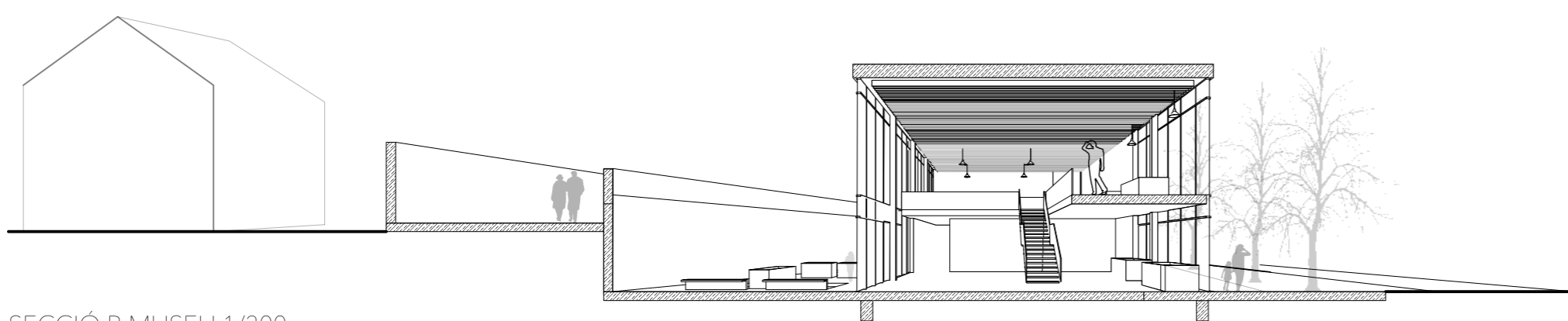
-AXES-
DUE TO THE SHAPE
AND URBANISTIC
STRUCTURE THE
ALIGNMENT OF THE
CAFE AND THE
SHAPE OF THE BIG
PATIO ARE
FOLLOWING THE
IMPORTANT AXES OF
THE SITE.



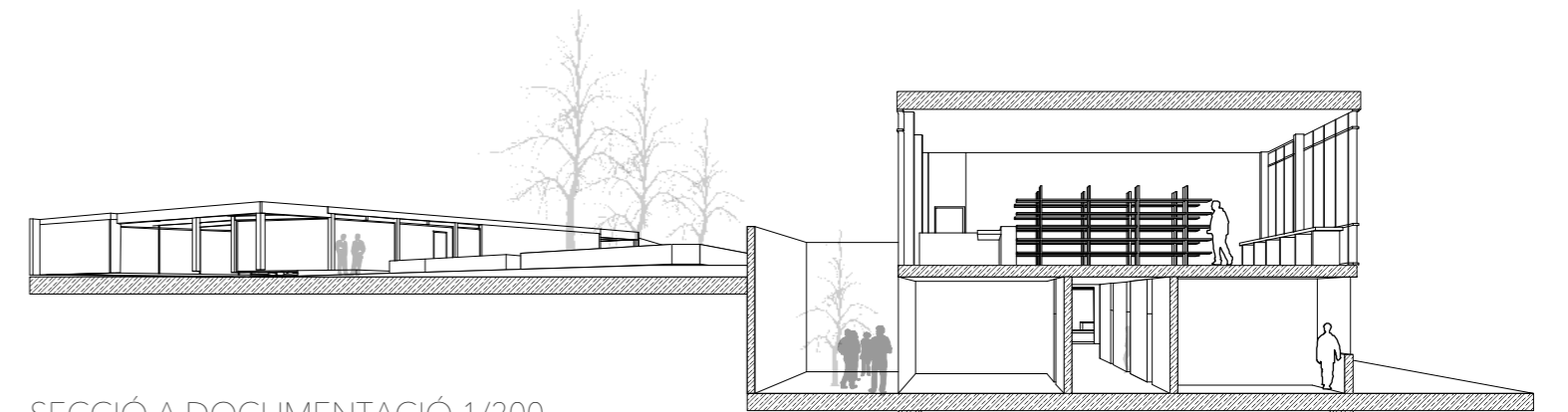
-FACILITIES-
TO AVOID TWO
FACILITY AREAS, A
CENTRAL
SUBTERRAN SPACE
PROVIDES THE
THREE DIFFERENT
BUILDING PARTS
WITH WATER, HEAT
AND SANITATION



-PATIOS-
IN ORDER TO DEAL WITH THE
SITE'S TERRAIN AND TO CREATE A
PLEASANT AND CALM AREA FOR
EITHER VISITORS AND WORKER.
THE BIGGER PATIO PROVIDES
SPACE FOR THE OUTDOOR
EXHIBITION OF THE MUSEUM. IT
ALSO GIVES VISITORS THE CHANCE
TO SEE THE OUTDOOR EXHIBITION
EVEN IF THE BUILDING IS CLOSED.



SECCIÓ B MUSEU 1/200



SECCIÓ A DOCUMENTACIÓ 1/200

