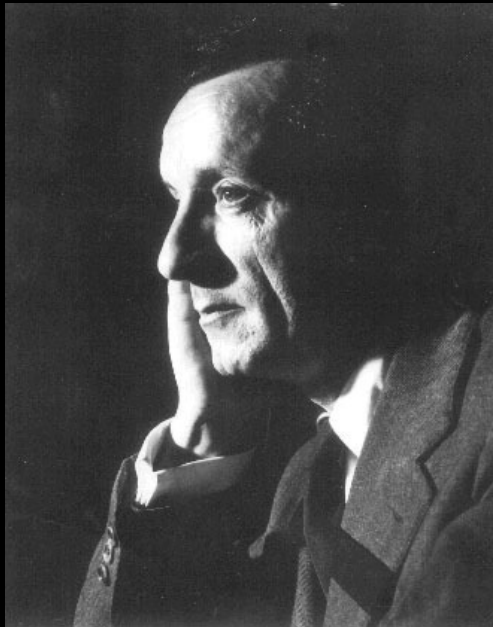


# **Architecture, Senses, Body and Perception:**

## The Phenomenology and the understanding through Merleau-Ponty

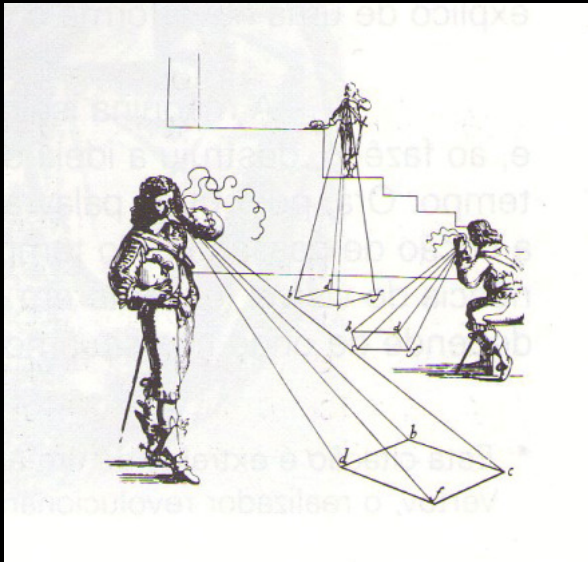


*“Science has not and never will have the same ontological sense as the perceived world, for the simple reason that it is a determination or an explanation of that world.”*

*“Truth does not “inhabit” only the “inner man”. Or more accurately, there is no inner man; man is in the world, it is within the world that he knows himself.”*

MERLEAU-PONTY, Maurice; *Phenomenology and Perception*, 2006

## Sight



The man in the course of his space travels, needs the body messages to ensure the stability of their visual world. Not having this body information, the human being loses the connection with the world.



*“The sight separates us from the world, while the rest of the senses joins him.”*

PALLASMAA, Juhani; *The Eyes of the Skin*, 1994

# Hearing

*“Sound is invisible but has the power to change the space characteristics we occupy”*

SCHULZ-DORNBURG, Julia; *Art and Architecture – New Affinities*, 2000



*“I think that the buildings always sound.  
They can sound unemotional too.”*

ZUMTHOR, Peter; *Atmospheres*, 2006

*“We feel pleasure and protection when  
the body discovers it’s resonance in  
space.”*

PALLASMAA, Juhani; *The eyes of the Skin*, 1994

## Smell



*“The nostrils awakes a forgotten image  
and fall into a vivid dream. The nose  
makes the eyes to remember.”*

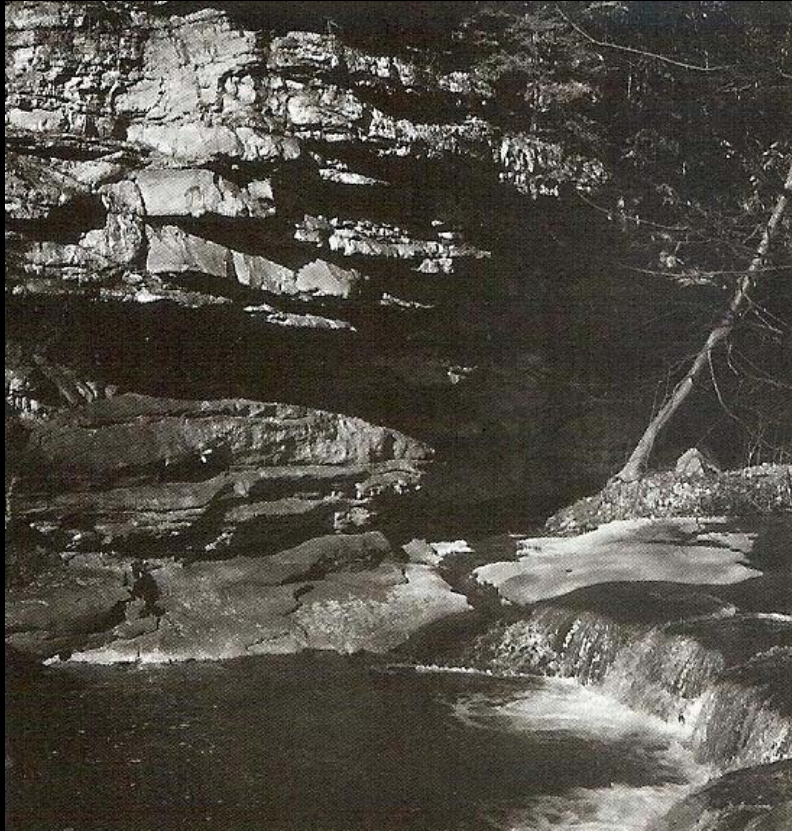
PALLASMAA, Juhani; *The eyes of the Skin*, 1994

# Touch



*“(...)while the tactile space separates the observer from the objects, the visual space separates the objects from each other (...) the perceptual world is guided by the touch, being more immediate and welcoming than the world guided by sight*

ZUMTHOR, Peter; *Thinking Architecture*, 2005



## Vals therms: Peter Zumthor

*“Mountain, stone, water, building with stone, built in the mountains: our attempts to give to this words an architectural interpretation, transfer it’s meaning and sensuality guided by our building plan as we were shaping it step by step.”*

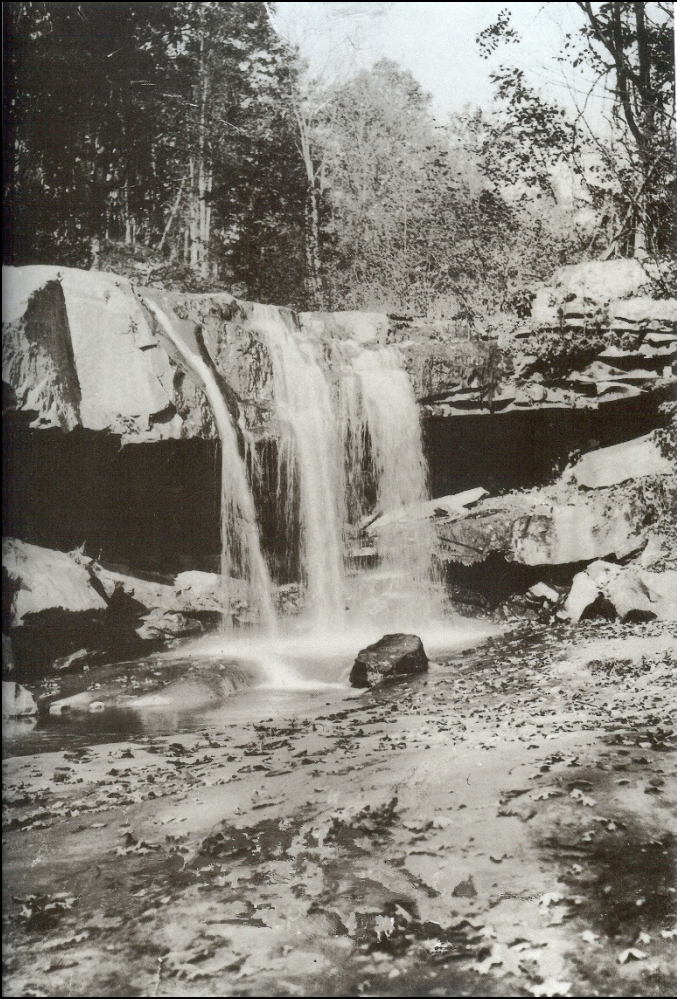
Peter Zumthor







**Liliane and Edgar J. Kaufmann House:  
Fallingwater – Frank Lloyd Wright**









*“The building is a machine able to produce some human reactions predetermined.”*

ZUMTHOR, Peter; *Thinking Architecture*, 2005



Gonçalo Jorge  
Locus Workshop | Ibiza 2010